



Pick Your Term

13 Month CD with a 2.53% APY*	24 Month CD with a 2.79% APY**	36 Month CD with a 3.09% APY***
---	--	---



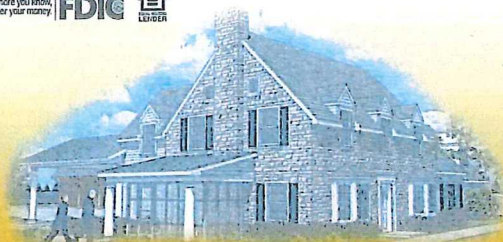
WITH TWO LOCATIONS

3540 Old Philadelphia Pk.
 Intercourse, PA 17534
 717-929-0829

309 N. Ronks Rd.
 Bird-in-Hand, PA 17505
 (Located on corner of Rt. 340 & Ronks Rd.)
 717-768-8811

Please visit our website to find where our mobile branch is
www.BIHBANK.com

HOURS	LOBBY	DRIVE-THRU
Mon.-Thurs.	9am-3pm	8am-5pm
Friday	9am-7pm	8am-7pm
Saturday	8:30am-12pm	8:30am-12pm



**Local Ownership. Local Decisions.
 Local People.**

***13 month CD promo offer of 2.53% APY (Annual Percentage Yield) requires a minimum investment of \$5,000.00. Penalty for early withdrawal applies. Fees may reduce earnings. At maturity of CD Term, pricing for renewal will revert to standard 13 Month CD Pricing. Rate is valid as of September 24, 2018. Offer can be withdrawn at any time.**

****24 month CD promo offer of 2.79% (Annual Percentage Yield) requires a minimum investment of \$5,000.00. Penalty for early withdrawal applies. Fees may reduce earnings. At maturity of CD Term, pricing for renewal will revert to standard 24 Month CD Pricing. Rate is valid as of September 24, 2018. Offer can be withdrawn at any time.**

*****36 Month CD Promo offer of 3.09% APY (Annual Percentage Yield) requires a minimum investment of \$5,000.00. Penalty for early withdrawal applies. Fees may reduce earnings. At maturity of CD Term, pricing for renewal will revert to standard 36 Month CD pricing. Rate is valid as of September 24, 2018. Offer can be withdrawn at any time.**



Business Interest Checking Account
 with a
1.51% APY*

Money Market Account
 with a
1.77% APY**



WITH TWO LOCATIONS

3540 Old Philadelphia Pk.
 Intercourse, PA 17534
 717-929-0829

309 N. Ronks Rd.
 Bird-in-Hand, PA 17505
 (Located on corner of Rt. 340 & Ronks Rd.)
 717-768-8811

Please visit our website to find where our mobile branch is
www.BIHBANK.com

HOURS	LOBBY	DRIVE-THRU
Mon.-Thurs.	9am-3pm	8am-5pm
Friday	9am-7pm	8am-7pm
Saturday	8:30am-12pm	8:30am-12pm



**Local Ownership. Local Decisions.
 Local People.**

***Business interest checking account earns 1.51% APY (Annual Percentage Yield). Requires minimum deposit of \$50,000.00. Balances below \$50,000.00 will earn standard Business Interest Checking APY. The APYs offered as of September 24, 2018 can be changed at any time without notice. \$0.00-\$9,999.99- .15% APY, \$10,000.00-\$49,999.99- .25% APY, \$50,000.00 and over- 1.51% APY. \$1,000.00 minimum balance to avoid monthly service charge. Fees may reduce earnings.**

****Money Market Account earns 1.77% APY (Annual Percentage Yield). Requires minimum deposit of \$25,000.00. Balances below \$25,000.00 will earn standard Money Market APY. The APYs offered as of September 24, 2018 can be changed at any time without notice. \$0.00-\$999.99- .05% APY, \$1,000-\$4,999.99- .10% APY, \$5,000.00-\$9,999.99- .15% APY, \$10,000.00-\$24,999.99- .20% APY, \$25,000.00 AND OVER- 1.77% APY. \$5,000.00 minimum balance to avoid monthly service charge. Fees may reduce earnings. Transactions are limited to 6 per statement cycle - pre-authorized withdrawals, automatic or phone transfers, checks, drafts, debit card transactions. Transactions that are unlimited- in person withdrawals, transfers and ATM transfers.**